



Flare Mounted Threaded Standoffs

Series CKFB3



CKFB3 flare mounted threaded standoffs provide a flared shank for stronger holding power and are used for spacing or stacking P-C boards.

Series	Material	Finish
CKFB3	Brass CDA-360	Electro Tin Plating ASTM B545 Class B (Zinc* Optional)

Part Number Structure:

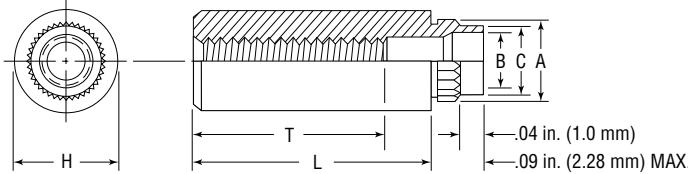
*Spec. ASTM B633-85

CKFB3 440-2



Thread: Class 2B, MIL-S-7742; (6H ISO Metric).

Use in: Materials with Rockwell Hardness of B-65 or less.



Dimensions & Specifications

Thread Size	Part Number	L Length ± .005 in.										A ±.003	C Max.	B ±.003	H ±.005	+ .005 - .001	Min.	Min.	
		.0625	.125	.1875	.250	.3125	.375	.500	.625	.750									
		Full																	.375 + .015
#4-40	CKFB3440	-2	-4	-6	-8	-10	-12	-16	-20			.179	.165	.122	.22	.166	.17	.050	
#6-32	CKFB3632	-2	-4	-6	-8	-10	-12	-16	-20*	-24*		.226	.212	.171	.28	.213	.22	.065	
"T" Minimum thread length		Full										.375 + .015							

Dimensions & Specifications

Thread Size	Part Number	L Length ± 0.13 mm										A ± .08	C Max.	B ±.08	H ±.13	+ .13 - .03	Min.	Min.	
		2	3	4	6	8	10	12	14	16									
		Full																	9.5 ± 0.4
M3x0.5	CKFB3M3	-2	-3	-4	-6	-8	-10	-12	-14	-16		4.55	4.21	3.20	5.56	4.2	4.33	1.27	
M4x0.7	CKFB3M4	-2	-3	-4	-6	-8	-10	-12	-14	-16		6.68	6.40	5.23	8.74	6.4	6.36	1.65	
"T" Minimum thread length		Full										9.5 ± 0.4							

Installation & Performance Data

Thread Size	Fiberglass 0.060 in. (1.5 mm)		
	Installation Force (lbs.)	Pushout (lbs.)	Torque-out (in.-lbs.)
#4-40	1000	140	18
#6-32	1500	170	28
Thread Size	Installation Force (kN)	Pushout (N)	Torque-out (N•m)
M3	4.4	560	2.02
M4	6.0	680	3.20