

RM – Type Ferrite Cores, Bobbins & Clamps



■ Ordering Code System

[Cores]

F RM - 10 M NC-10H
① ② ③ ④

- ① Type of Core
- ② Size of Core
- ③ Mirror Lapping
- ④ Material

[Bobbins]

BRM - 10 - 3 12 - B
① ② ③ ④ ⑤

- ① Type of Bobbin
- ② Size of Core
- ③ Material
- ④ Number of Pins
- ⑤ Manufacturer's Symbol

[Clamps]

CRM - 10 - B
① ② ③

- ① Type of Clamp
- ② Size of Core
- ③ Manufacturer's Symbol

RM – Type Cores

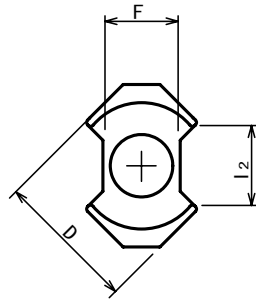
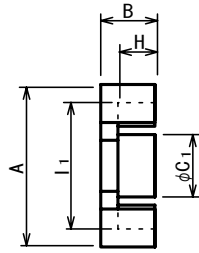


Fig. 1

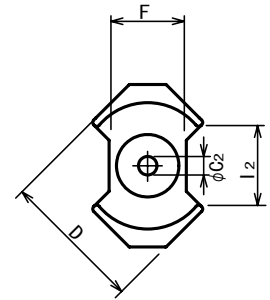


Fig. 2

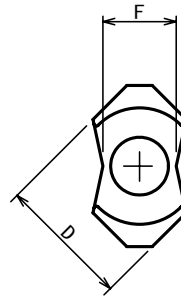
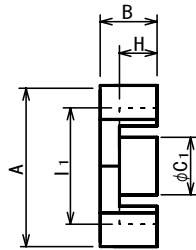


Fig. 3

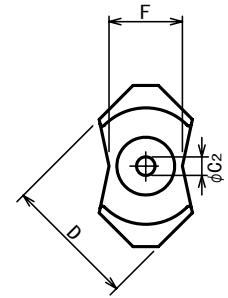


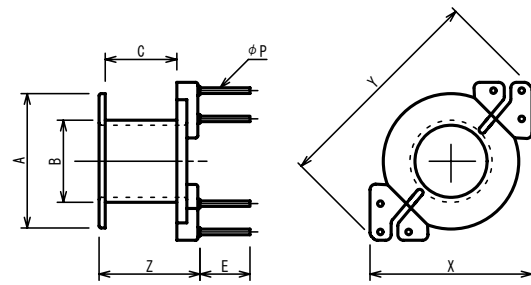
Fig. 4

Cores	Fig	Dimensions (mm)									Weight (g/set)
		A	B	ϕC_1	ϕC_2	D	F	H	I_1	I_2	
FRM-4	1	11.1±0.25	5.2±0.05	3.8±0.1		9.73±0.2	4.5±0.15	3.6±0.1	8.3±0.2	5.8 min	1.9
FRM-5	1	14.65±0.25	5.2±0.05	4.8±0.1		12.05±0.25	6.6±0.2	3.25±0.1	10.4±0.2	6.0 min	3.3
FRM-5H	2	14.65±0.25	5.2±0.05	4.8±0.1	2.0 +0.1 -0	12.05±0.25	6.6±0.2	3.25±0.1	10.4±0.2	6.0 min	3.0
FRM-6	3	17.6±0.3	6.2±0.15	6.3±0.1		14.4±0.3	8.0±0.2	4.1±0.15	12.65±0.25		5.5
FRM-6H	4	17.6±0.3	6.2±0.15	6.3±0.1	2.95 +0.2 -0	14.4±0.3	8.0±0.2	4.1±0.15	12.65±0.25		4.8
FRM-8	1	22.75±0.45	8.2±0.07	8.4±0.15		19.35±0.35	10.8±0.2	5.5±0.1	17.3±0.3	9.8 min	12.2
FRM-10	1	27.85±0.65	9.3±0.05	10.7±0.2		24.15±0.55	13.25±0.25	6.35±0.15	21.65±0.45	11.3 min	23.1
FRM-12	1	36.75±0.65	11.7±0.05	12.6±0.2		29.25±0.55	16.0 (ref.)	8.55±0.15	25.5±0.5	15.0 (ref.)	41.2

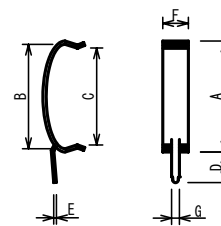
Cores	Material	AL [nH/N ²]	Effective Parameter			
			$\Sigma \ell / A$ (mm ⁻¹)	Ae (mm ²)	ℓe (mm)	Ve (mm ³)
FRM-4	NC-2H	1000 ±25%	1.62	14.0	22.7	317.8
	2HM4	1100 ±25%				
	NC-1L	1200 ±25%				
FRM-4M	NC-5Y *	2320 min.	1.62	14.0	22.7	317.8
	NC-7 *	2625 min.				
	NC-10H *	3465 min.				
FRM-5	NC-2H	2000 ±25%	0.94	23.7	22.4	530.0
	2HM4	2130 ±25%				
	NC-1L	2200 ±25%				
FRM-5M	NC-5Y *	3600 min.	0.94	23.7	22.4	530.0
	NC-7 *	4650 min.				
	NC-10H *	6700 min.				
FRM-5H	NC-2H	1565 ±25%	1.02	21.0	21.4	450.0
	2HM4	1650 ±25%				
	NC-1L	1780 ±25%				
FRM-5HM	NC-5Y *	2920 min.	1.02	21.0	21.4	450.0
	NC-7 *	3765 min.				
	NC-10H *	5500 min.				
FRM-6	NC-2H	2500 ±25%	0.78	36.6	28.6	1050.0
	2HM4	2640 ±25%				
	NC-1L	2980 ±25%				
FRM-6M	NC-5Y *	4560 min.	0.78	36.6	28.6	1050.0
	NC-7 *	6300 min.				
	NC-10H *	6650 min.				
FRM-6H	NC-2H	2200 ±25%	0.86	31.0	27.0	840.0
	2HM4	2460 ±25%				
	NC-1L	2640 ±25%				
FRM-6HM	NC-5Y *	3685 min.	0.86	31.0	27.0	840.0
	NC-7 *	5100 min.				
	NC-10H *	5460 min.				
FRM-8	NC-2H	3700 ±25%	0.59	64.0	38.0	2430.0
	2HM4	3800 ±25%				
	NC-1L	4400 ±25%				
FRM-8M	NC-5Y *	5820 min.	0.59	64.0	38.0	2430.0
	NC-7 *	8070 min.				
	NC-10H *	10500 min.				
FRM-10	NC-2H	4800 ±25%	0.45	98.0	44.0	4310.0
	2HM4	5200 ±25%				
	NC-1L	5760 ±25%				
FRM-10M	NC-5Y *	7650 min.	0.45	98.0	44.0	4310.0
	NC-7 *	10870 min.				
	NC-10H *	14630 min.				
FRM-12	NC-2H	5700 ±25%	0.42	134.9	56.8	7658.0
	2HM4	5900 ±25%				
	NC-1L	6800 ±25%				
FRM-12M	NC-5Y *	8200 min.	0.42	134.9	56.8	7658.0
	NC-7 *	12500 min.				
	NC-10H *	16500 min.				

Notes: Test Conditions : 1kHz, 0.5mA, 100Ts
Core Gapping : Gapped core is available on request.
ご注文によりギャップ付コアも用意します。
* Mark : Mirror Lapping

RM – Type Bobbins & Clamps

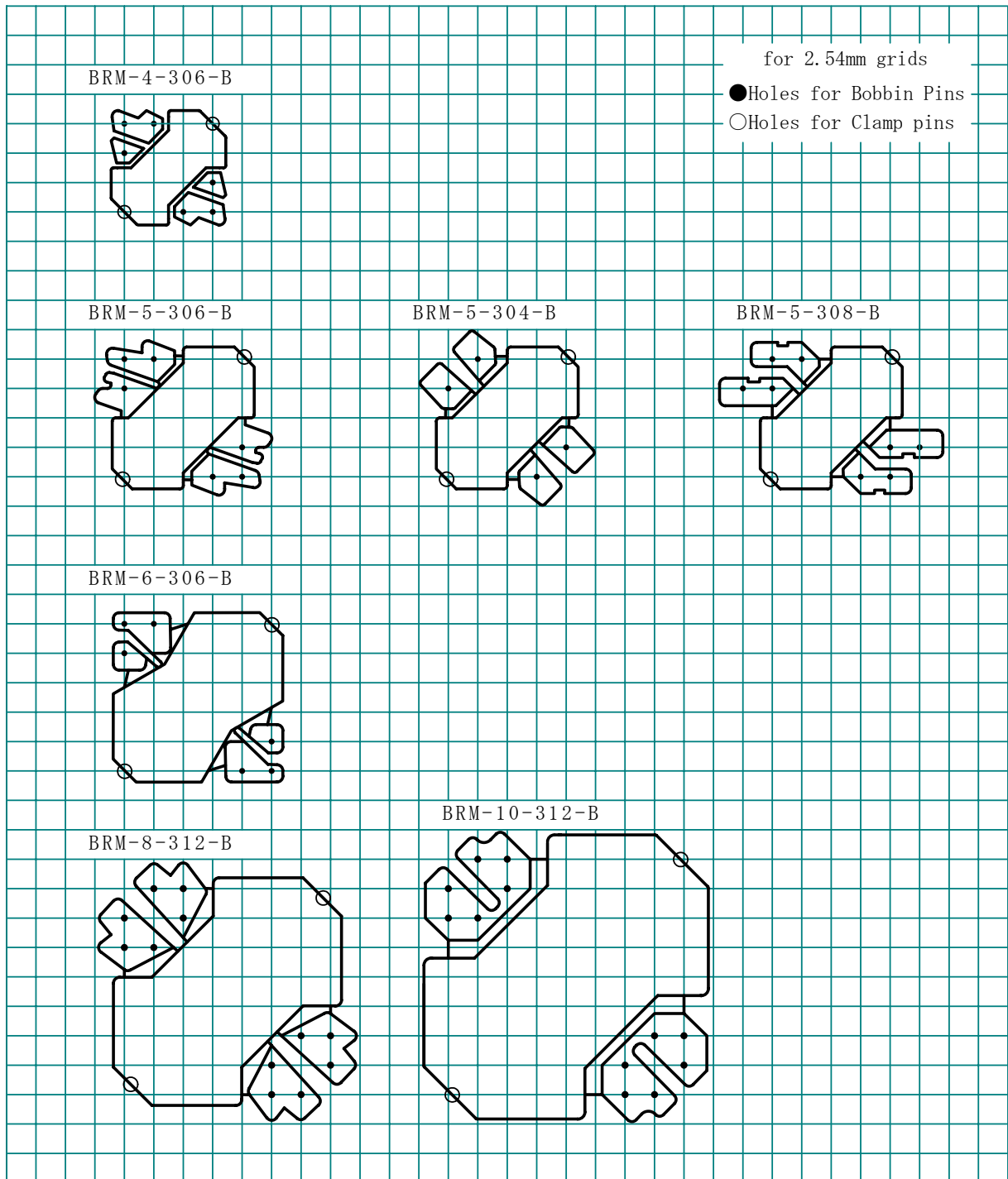


Bobbins	Dimensions (mm)								Terminal pins	
	ϕA	ϕB	C	E	X	Y	Z	t (mm)		ϕP
BRM-4-306-B	7.9	4.9	5.75	4.4		12.8	8	0.45	0.5	6
BRM-5-304-B	10.0	6.0	4.8	4.4		13.2	7.2	0.5	0.5	4
BRM-5S-304-B	10.0	6.0	2.2×2	4.4		13.2	7.2	0.5	0.5	4
BRM-5-306-B	10.0	6.0	4.85	4.4	12.5	16.5	7.2	0.5	0.5	6
BRM-5-308-B	10.0	6.0	4.85	4.4	12.5	16.5	7.2	0.5	0.5	8
BRM-6-306-B	12.2	7.4	6.4	4.7	15.0	20.0	8.9	0.5	0.5	6
BRM-8-312-B	16.7	9.8	9.2	4.4		24.4	12.3	0.5	0.6	12
BRM-10-312-B	20.9	12.2	10.6	4.8		28.1	13.4	0.5	0.6	12
BRM-12-312-B	24.6	14.4		4.8		28.1	13.4	0.5	0.6	12



Clamps	Dimensions (mm)						
	A	B	C	D	E	F	G
CRM-4-B	10.0	9.3	8.7	3.0	0.3	2.6	0.6 x 0.2
CRM-5-B	10.0	9.3	8.7	3.0	0.3	2.6	0.6 x 0.2
CRM-6-B	12.0	10.9	9.7	3.0	0.4	2.3	0.6 x 0.4
CRM-8-B	15.7	14.9	13.6	3.0	0.4	4.0	0.7 x 0.4
CRM-10-B	17.7	17.0	15.3	3.4	0.4	4.5	0.7 x 0.4

RM - Type Bobbins & Pin Pattern



Notes : UL-Rec. : UL94V-0
 Bobbin Material : Phenol PM-9630
 Clamp Material : Spring Steel

