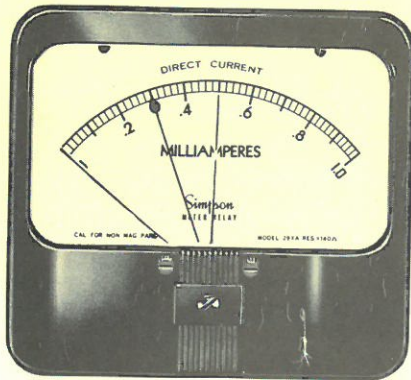
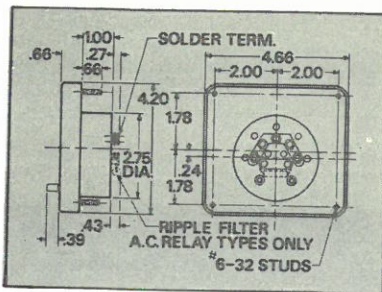


METER RELAYS 4½ inch RECTANGULAR

MODEL 29XA FRONT ADJUSTABLE METER RELAYS



DIMENSIONAL DIAGRAM



Simpson Stock Meter Relay Ranges

Range	Description	Approx. Resistance (ohms)
0-50	DC Microammeter	5200
0-100	DC Microammeter	1800
0-200	DC Microammeter	1000
0-500	DC Microammeter	280
0-1	DC Milliammeter	140
0-50	DC Millivoltmeter	10

Approx. ship. wt., 1 lb.

Dual-Adjust Contact Arrangement

Self-shielding meter movement. Voltage and current rating for adjustable contacts is 15 volts DC @ 10 milliamperes (maximum) on resistive or diode protected inductive loads. Mechanical adjustment to within 2 angular degrees.

A selection of current and voltage actuated meter relays suitable for alarm, control, or limit setting applications is available from your Electronics Parts Distributor. Excellent for use with communications equipment designed for unattended operation. All movements are of the D'Arsonval type. Non-locking contacts may be positioned along the instrument scale arc by means of an external, front-adjusted gear drive. Rectangular construction similar to Simpson Model 29.

ELECTRICAL SPECIFICATIONS

GENERAL: Model 29AX Relays are of the D'Arsonval Type. Externally adjusted limit-setting contacts are non-locking and intended for circuits with external locking provisions or for light duty non-locking applications.

CALIBRATION: Accuracy $\pm 2\%$ of full scale.

CONTACTS: Gold alloy, for use @ 15 volts DC @ 10 milliamperes maximum on resistive or diode protected inductive loads.

CONTACT ADJUSTMENT: Contacts are externally adjustable over 95° of 100° scale arc, and within 5° of each other. The pointer will indicate the contact "make" position within 2° of actual contact intercept.

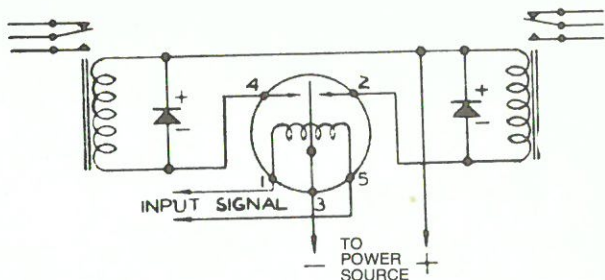
CONTACT DIFFERENTIAL: Normally, contacts will close within 2% of full scale value and break within 10% of full scale value.

INSULATION: Breakdown 300 volts AC from relay contacts to meter circuit. 3 kV AC test from relay terminals to mounting panel. All tests at 60 Hz.

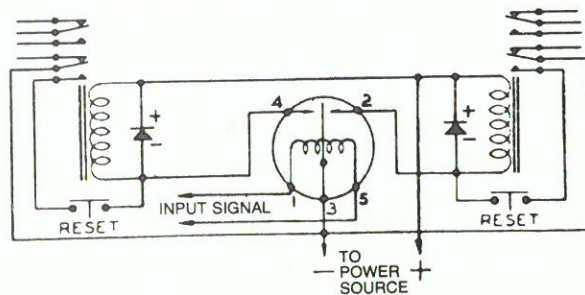
OVER FIFTY YEARS OF METER EXPERIENCE
SEE SIMPSON FOR ALL OF YOUR METER REQUIREMENTS

Write directly to Simpson Electric Company for additional information on your specific Meter Relay Problem.

SUGGESTED CIRCUITS USING SLAVE RELAY



NON-LOCKING ON-OFF CIRCUIT: The slave circuit(s) are ON only when the meter contacts are closed.

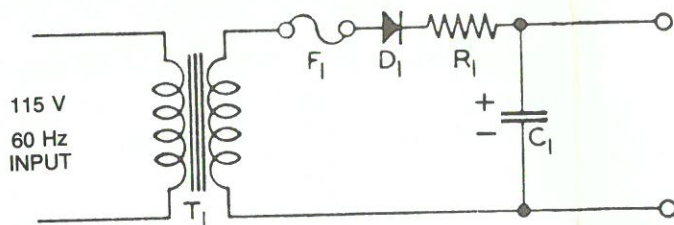


"LOCK-UP" CIRCUIT: The slave circuit(s) turn ON when the meter relay contacts first close and remain ON until power to the slave relay is interrupted.

SUGGESTED COMPONENTS FOR SLAVE RELAY CIRCUITS

SOURCE VOLTAGE	PROTECTIVE DIODE	SLAVE RELAY	
		SPDT	DPDT
15 DC Volts	1N91	Sigma 41F-5000-S/Sil Advance SO/1C/10000 D Potter & Brumfield RS5D-2500	Sigma 42RO-1000-G/Sil

SUITABLE POWER SUPPLY FOR SLAVE RELAY OPERATION



Open-circuit voltage of this power supply is approximately 15 volts.
Maximum continuous current is 75 mA.

PARTS LIST

- T_1 = 115:12.6 Volt Transformer
- F_1 = 1/10 Amp delayed action
- D_1 = 150 mA Silicon Diode, 50 P.I.V.
- R_1 = $10\Omega\frac{1}{2}$ watt
- C_1 = 250 μ F, 25 volts

SIMPSON ELECTRIC COMPANY

853 Dundee Avenue, Elgin, Illinois 60120

Area Code 312, Telephone 695-1121

In Canada, Bach-Simpson, Ltd., London, Ontario