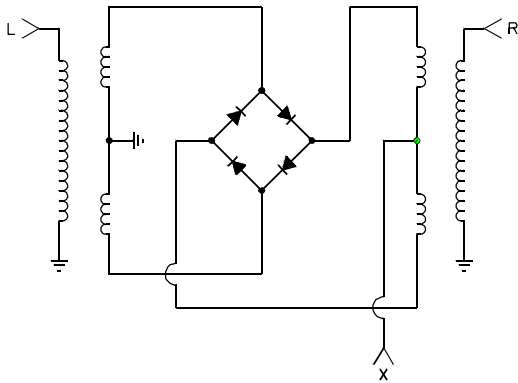


DMM -2 Series

DOUBLE BALANCED MIXER

1 to 1400 MHz / +7 to +13 dBm LO / SMA Connectors

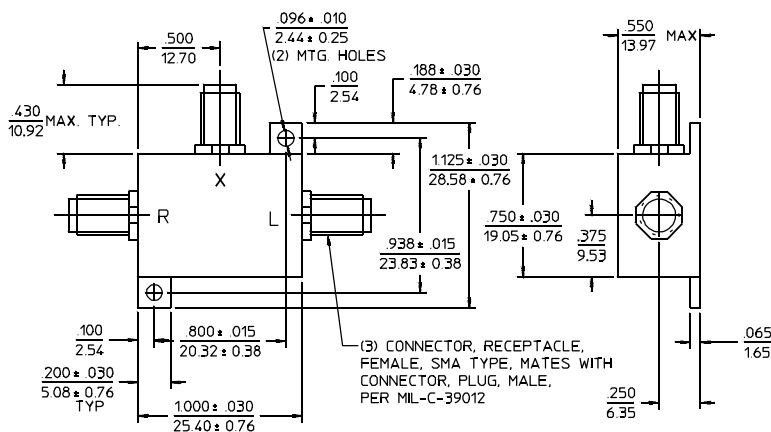


PRINCIPAL SPECIFICATIONS

Model Number	RF/LO Frequency, MHz	IF Frequency, MHz	Operating Range, MHz	Conversion Loss, dB		Port Isolation, Min. dB			Polarity Sense
				Max.	Typ.	L-R	L-X	R-X	
DMM-2-250	1 - 500	DC - 500	1 - 100	7.5	6.5	45	35	15	Pos.
			100 - 400	7.5	6.5	30	20	15	
			400 - 500	9.0	7.5	30	20	15	
DMM-2-500	10 - 1000	DC - 500	10 - 200	7.5	6.5	45	35	15	Pos.
			200 - 500	7.5	7.0	30	15	15	
			500 - 1000	8.0	7.0	30	15	15	
DMM-2-750	20 - 1400	DC - 500	20 - 200	8.5	7.5	40	30	15	Pos.
			200 - 1000	8.5	7.5	25	15	10	
			1000 - 1400	9.5	8.5	25	15	10	

All specifications are as measured in a 50Ω system, at nominal LO power, in a downconverter application

Package Outline



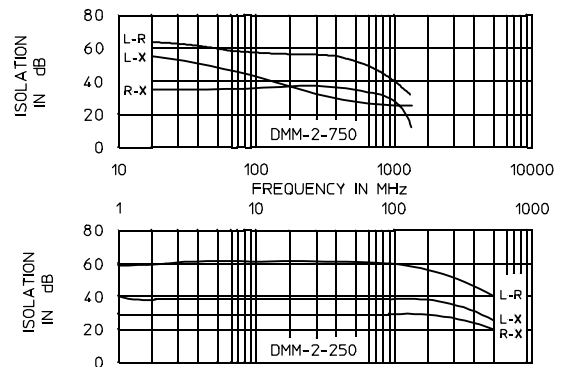
- NOTES:
1. Tolerance on 3 place decimals $\pm .020(.51)$ except as noted.
 2. Dimensions in inches over millimeters.
 3. Weight: 0.65 oz (18 g).
 4. SMA female, to mate with male per MIL-C-39012.

General Notes:

The DMM-2 series of Double Balanced Mixers covers the frequency range of 1 to 1400 MHz using selected diodes in the ring modulator to produce a low level mixer with high performance.

23Feb96

Typical of DMM-2-250 & 750



GENERAL SPECIFICATIONS

Impedance:	50 Ω nom.
Noise Figure:	Within ± 1 dB of Conversion Loss
LO Drive:	+7 nom.
1 dB Compression Point:	0 dBm typ.
1 dB Desensitization Level:	-2 dBm
Input Intercept Point:	+12 dBm typ.
Operating Temperature:	-55° to +85°C